

Content

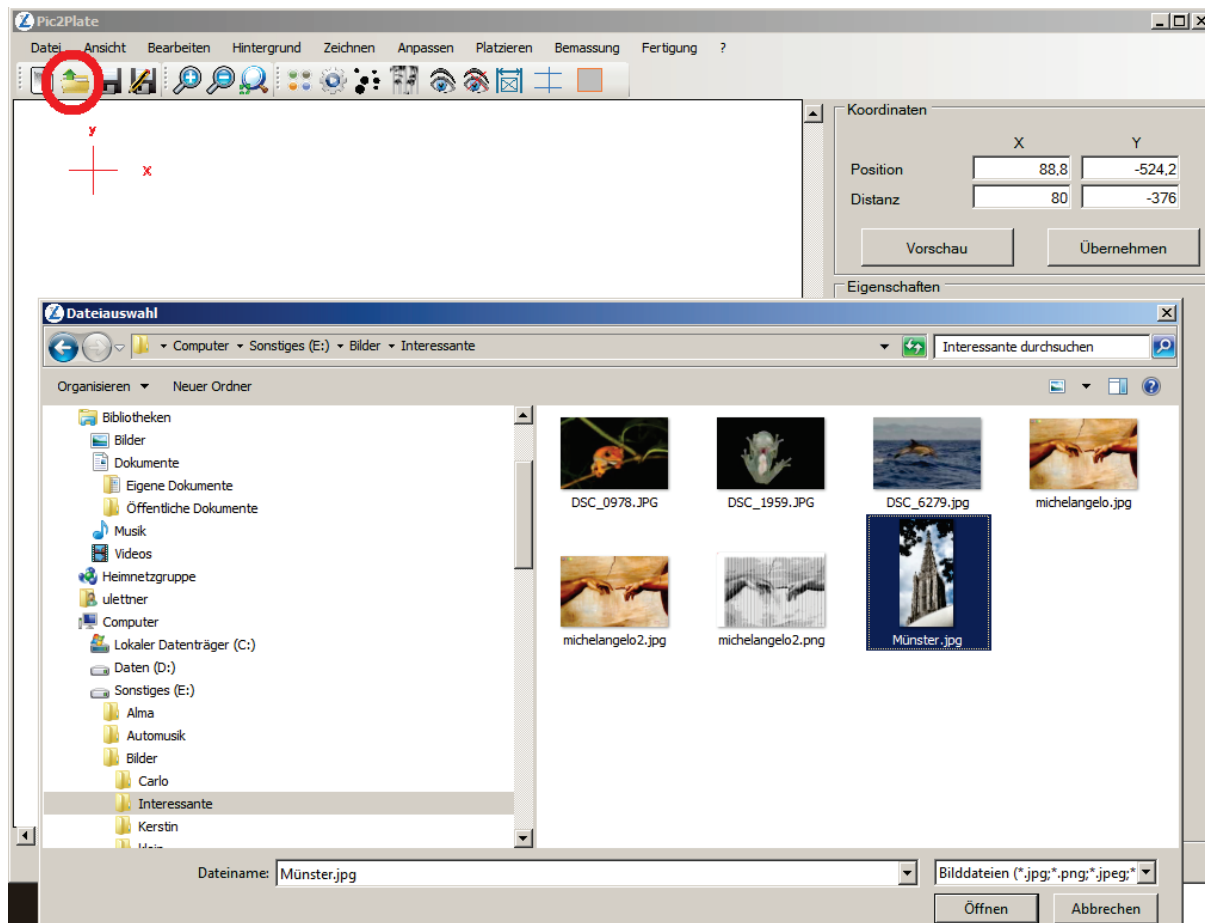
I. Start	2
II. File open	2
III. Modify dimension.....	3
IV. Create Engraving	3
V. Background and Zoom.....	4
VI. Save	4
VII. Help	4

I. Start

The application starts with an empty drawing. Please open a Picture file if you want to start a engraving.

II. File open

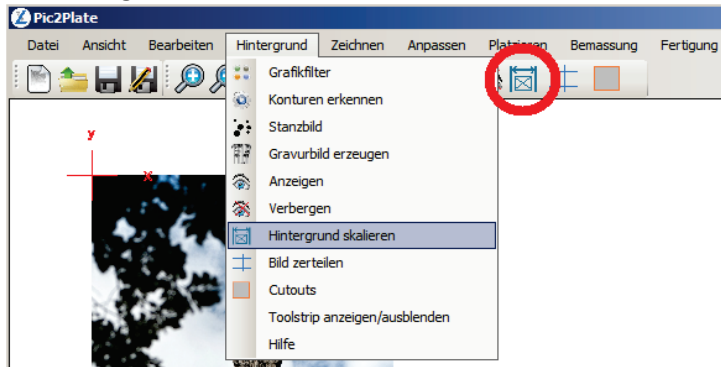
Please click on the „Open“-Button or launch the function „Open“ from the menu „File“ to join the File-Selection.



You can open different picture-formats or the internal „P2P-Format“ for saved projects.

III. Modify dimension

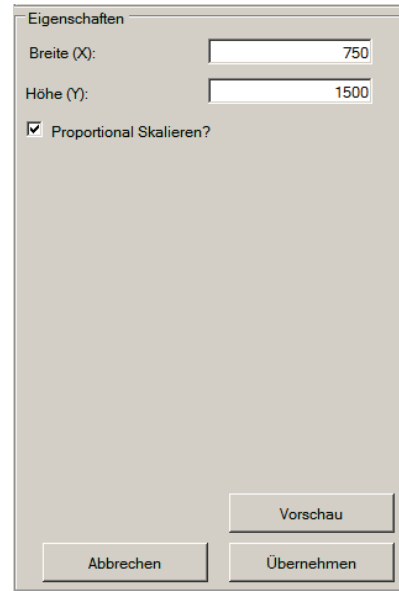
After loading a picture, the size can be corrected thanks to the function “Scale Background” from the “Background”-Menu.



After calling the function, the actual dimensions are shown in the property-box where it is possible to modify the values.

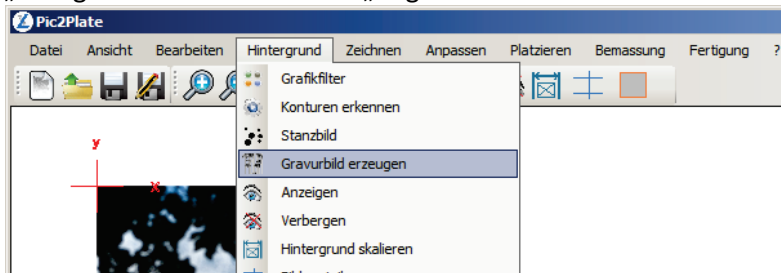
You can do the scaling “proportional” or free in each dimension.

The modification will be done with „OK“.



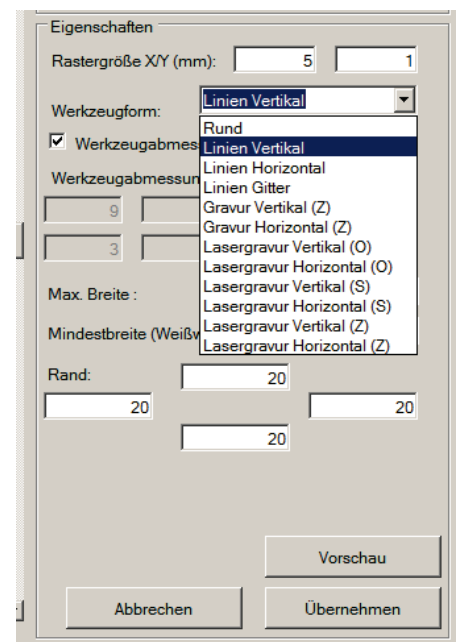
IV. Create Engraving

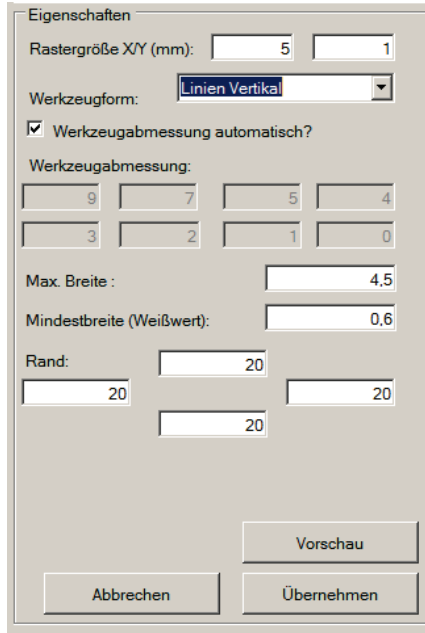
To convert the picture to Engraving-Contours you find different Algorithms inside the Menu „Background“ in the Function „Engraved Picture“.



After calling this function you find the available Algorithms in the Property-Box.

The Algorithms „Vertical Lines“ and „Horizontal Lines“ was implemented to do engrave Pictures on Milling machines.





Using the Grid-size you can define the resolution in X- and Y-Direction.

The Tool dimensions can be calculated „automatically“ (standard) or you can define special ones (advanced users).

The Max. Diameter defines the maximum width of an engraved line. The Min. Diameter defines the minimum width of an engraved line.

Using a negative value as Min. Diameter the Light-Areas will not be engraved.

Thanks to the „Border“-Settings you can create a border around the picture. The defined Area of the Picture will not be engraved.

„Preview“ starts the calculation and creates a preview of the result. You can overtake the results with „Ok“ or drop

them with „Cancel“.

Calling the function again, the previous results will be dropped.

V. Background and Zoom

To get a better impression of the results you can show/hide the original image using the Function „Show“ or „Hide“ from the „Background“-Menu.

Using the scrolling-wheel of the Mouse you can Zoom in or out.

VI. Save

The Results of your Work can be saved using the „Save as“-Function from the „File“-Menu. You can use different picture-formats or the internal P2P-format.

Using a picture-format you will receive a preview of the engraving-results.

The P2P-format is used to forward the results to other users having Pic2Plate. This format includes the original image and the calculated results and can be used to create a program for the milling machine.

VII. Help

Inside each Menu, you find the function „Help“ that opens a PDF where the single functions are described. Please use this function to get additional informations.